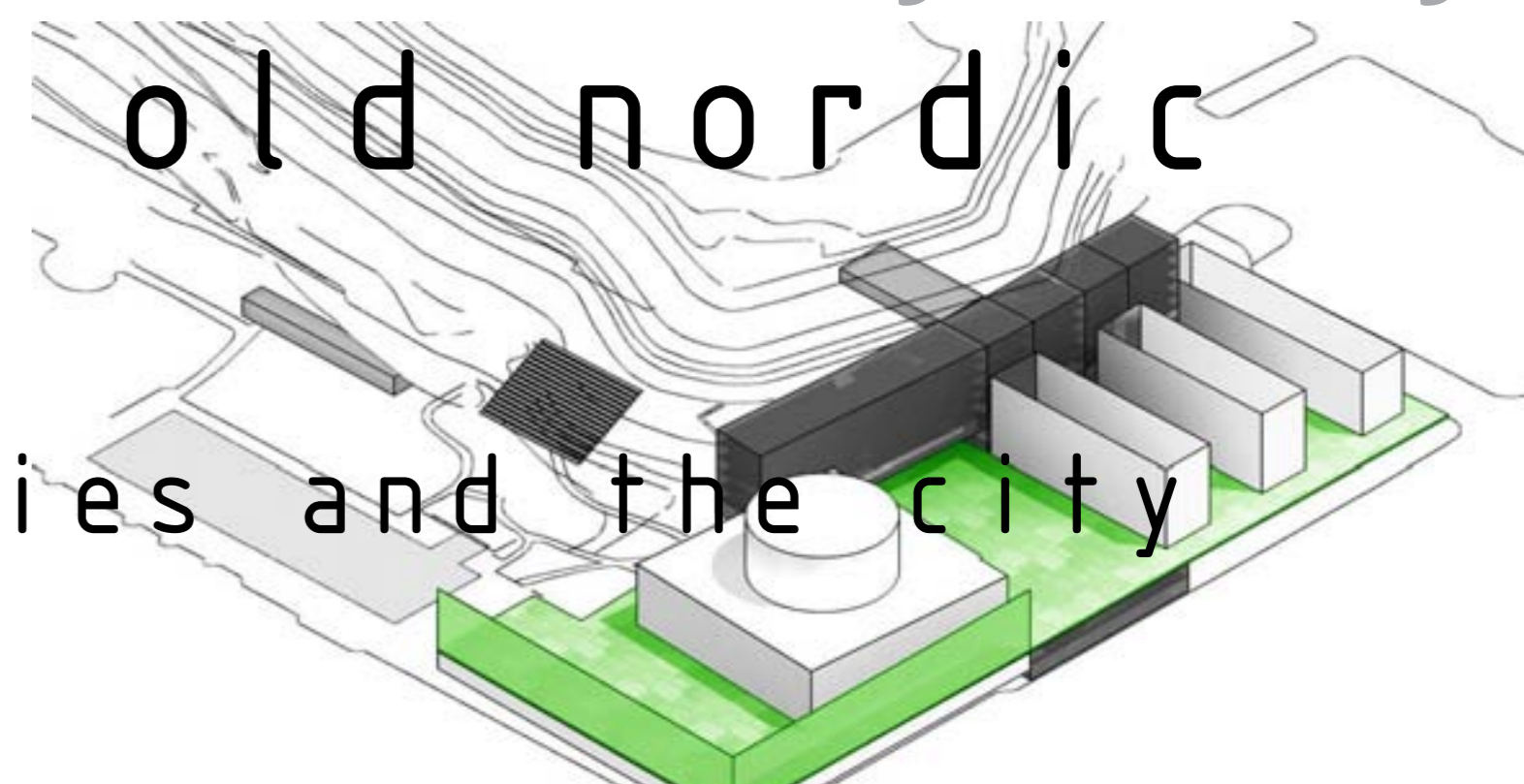


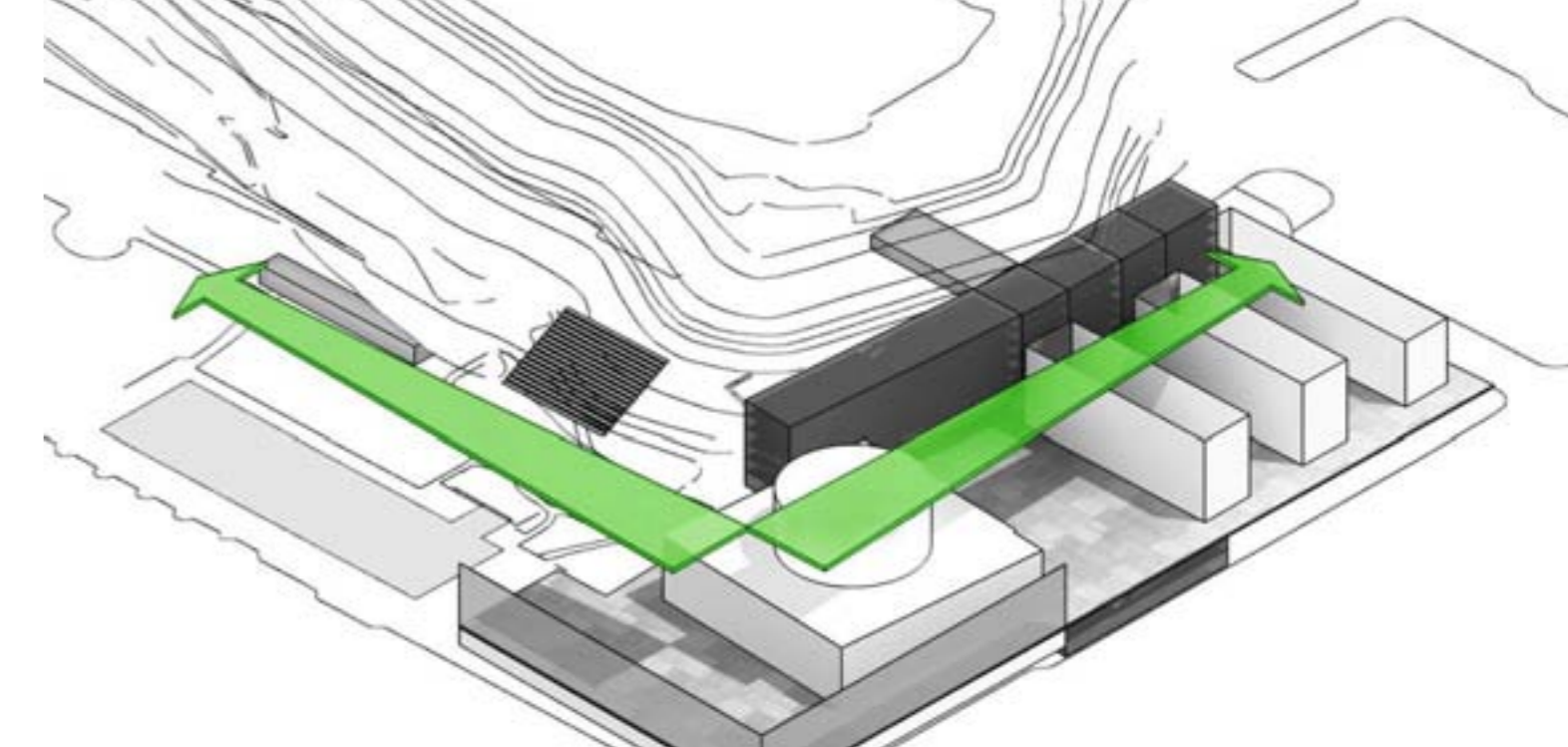
# Asplund. Architectural Competition. The Stockholm City Library

## 1 As Simple and Pure as old nordic literature interlacing the hill, the libraries and the city

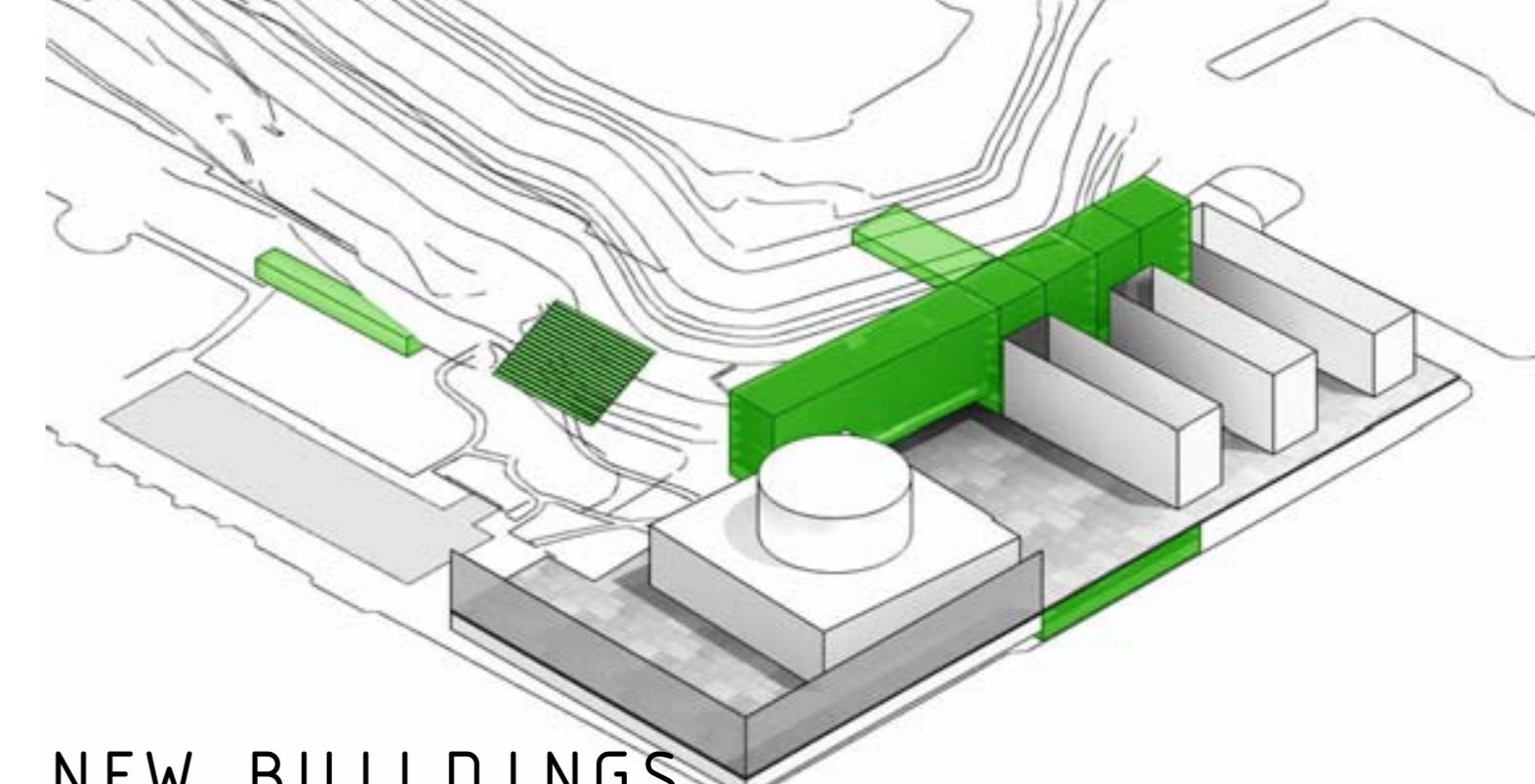
This complex **interlace** the city, the observatory hill and the old library with the new library and new public spaces, the main access plaza based in the original access of the four annex planned, have a direct **visual connection** to the observatory hill and walking connection with a bridge in the new library  
 In the corner of streets Odengatan and Sveavägen the **screen container** with audio-visual projecting for inside and outside to the city, creating a more intimate terrace and making people be near the Asplund library, this screen contain and articulate the zone of the reflecting pond with the zone of the new library.  
 Another element important is the roof with the propose to **unify** the public areas (access plaza and public streets) with the new and old library.  
 The intervention was planned to **respect, provoke and contrast**, with the Asplund library the Hill and the city.



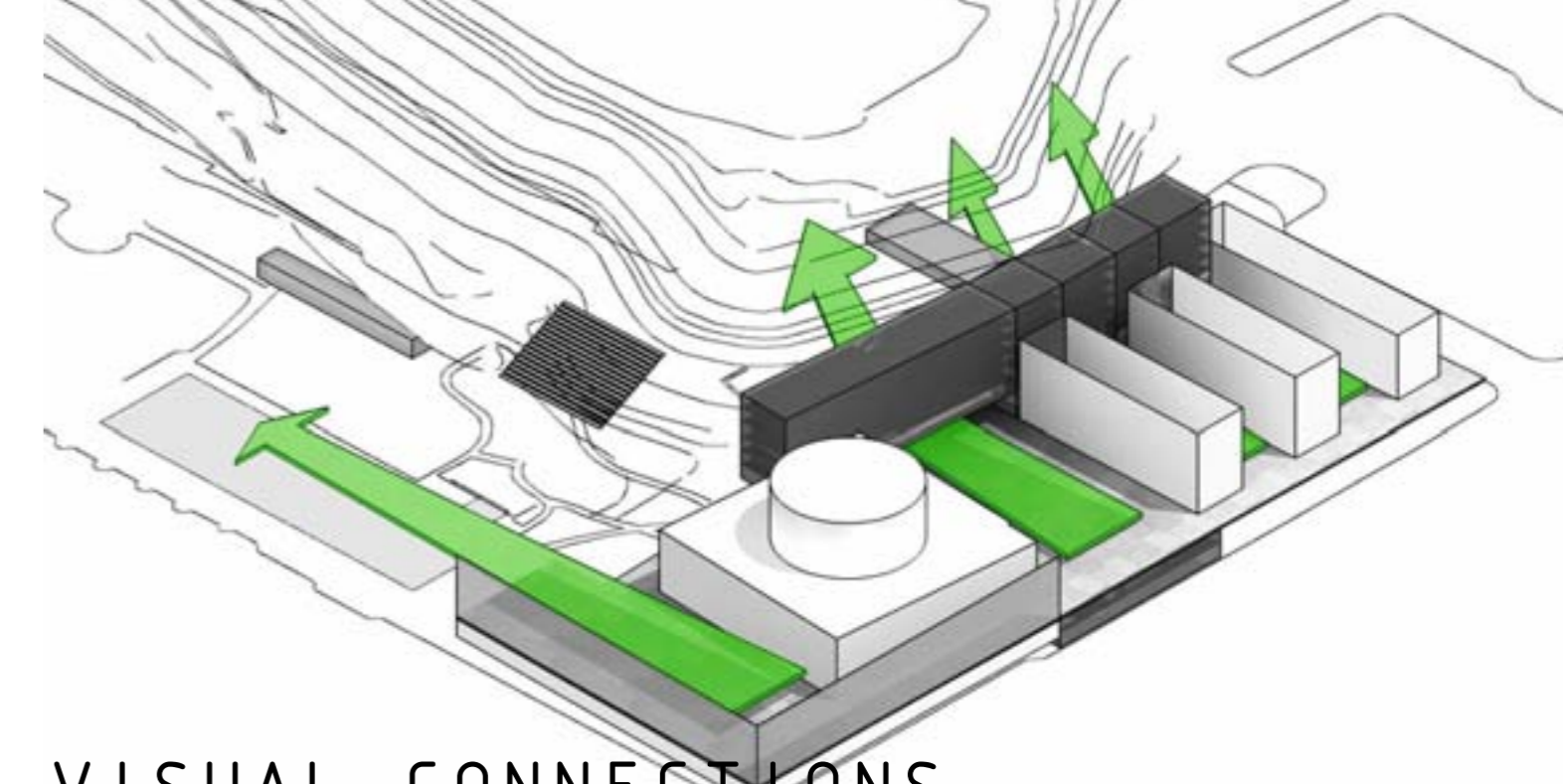
**SCREEN CONTAINER - PLAZA**  
 Intimate Terrace - Benches - Projection



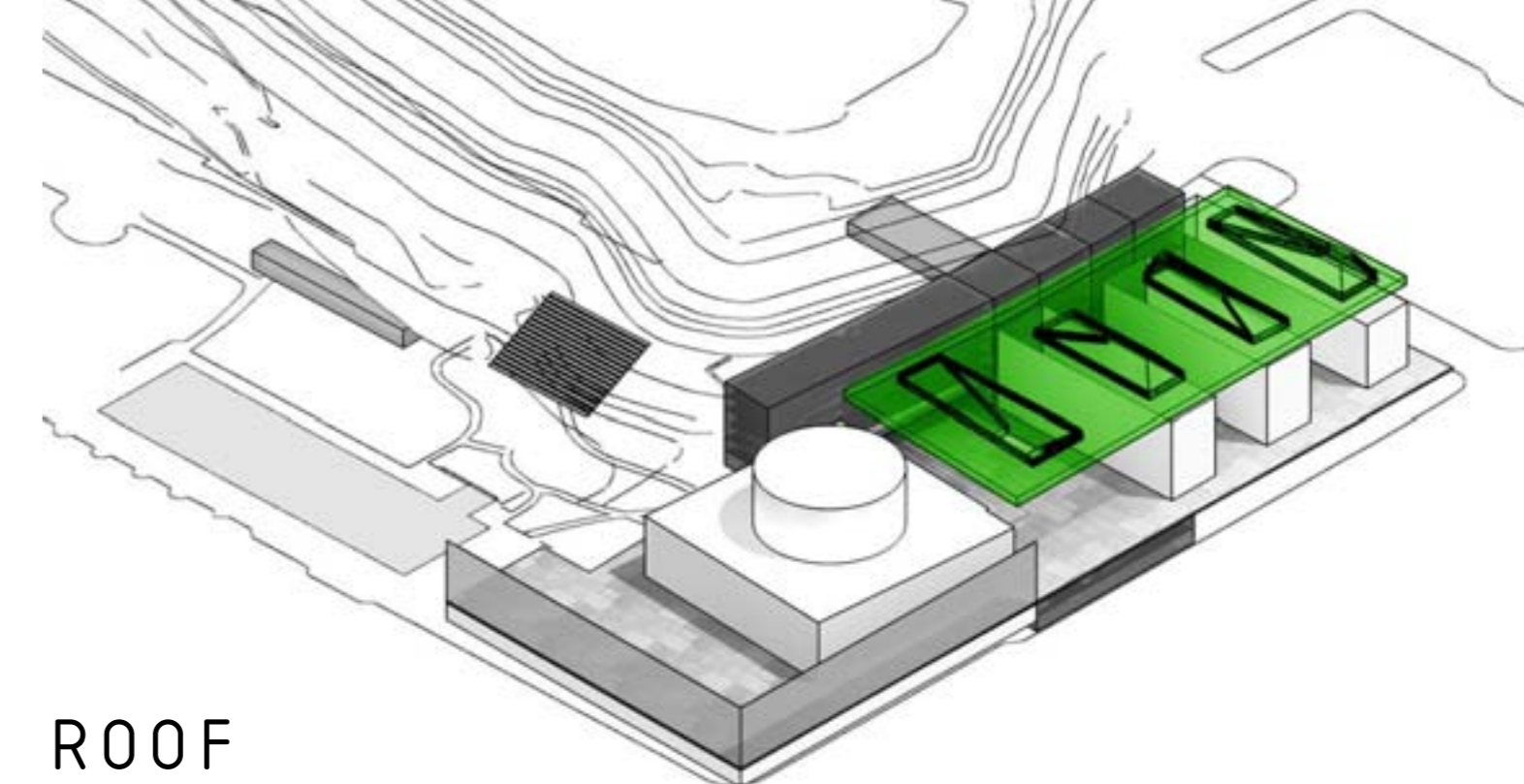
**ARTICULATION OF THE COMPLEX**  
 Connection Reflecting Pond - New Complex



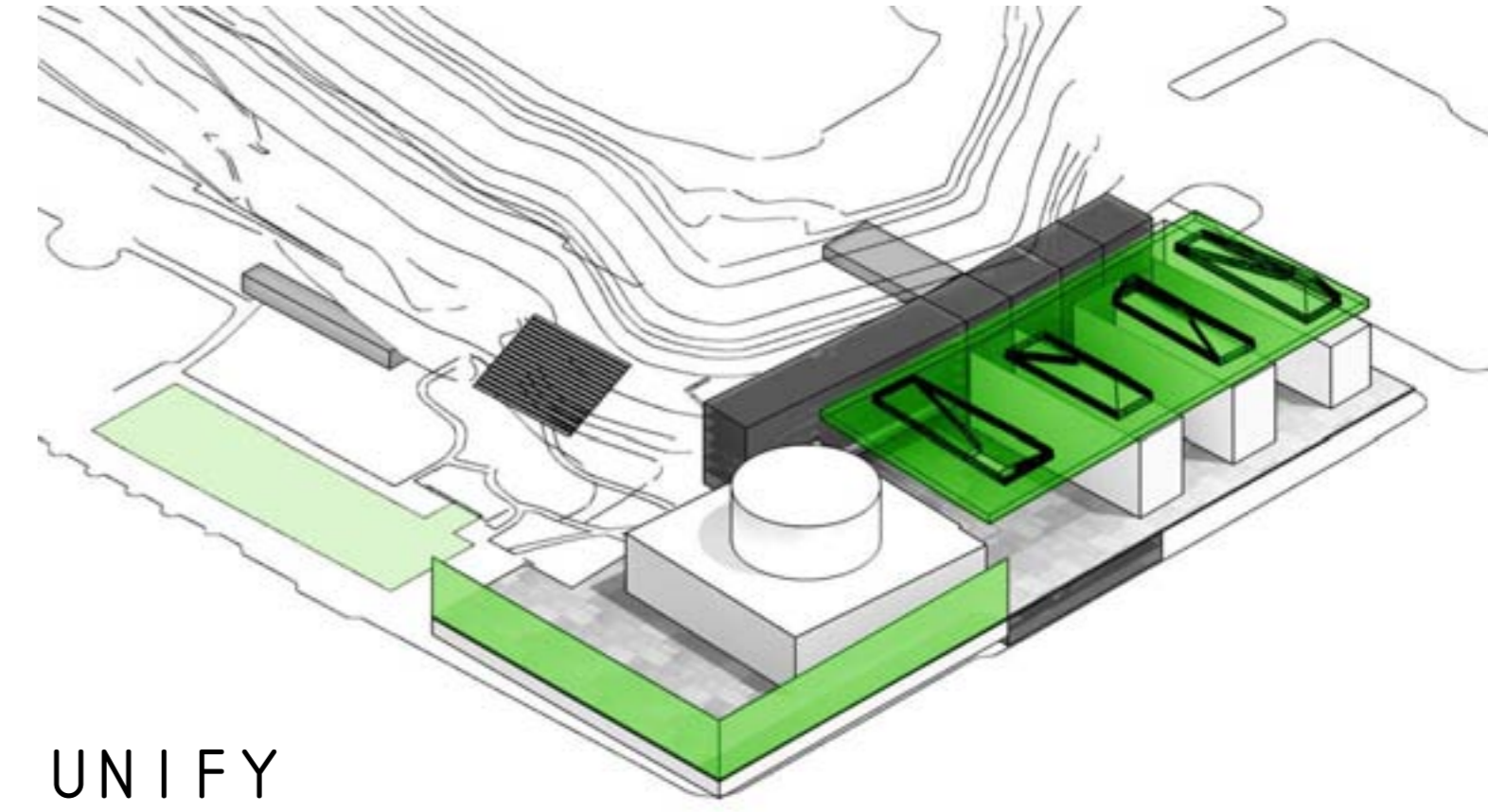
**NEW BUILDINGS**  
 Subjects Building - Administration Media Building - Pavillion - Auditorium



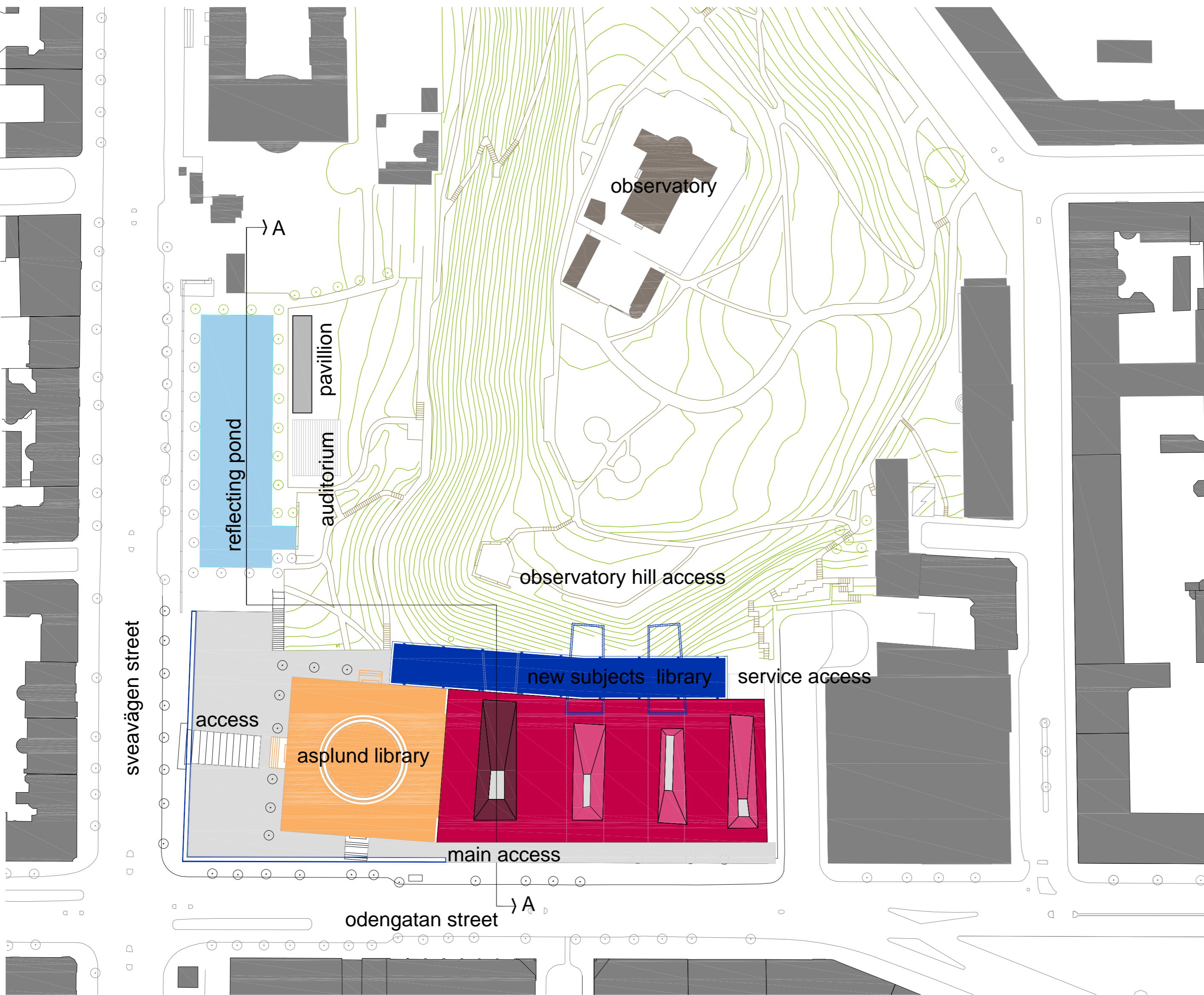
**VISUAL CONNECTIONS**  
 Odengatan St. - Plaza - Observatory Hill - Reflecting Pond



**ROOF**  
 Plaza - Public Spaces



**UNIFY**  
 Asplund - New Library - Reflecting Pond - Observatory Hill - Plaza



**SITE PLAN**  
 e s c | 1 : 1000

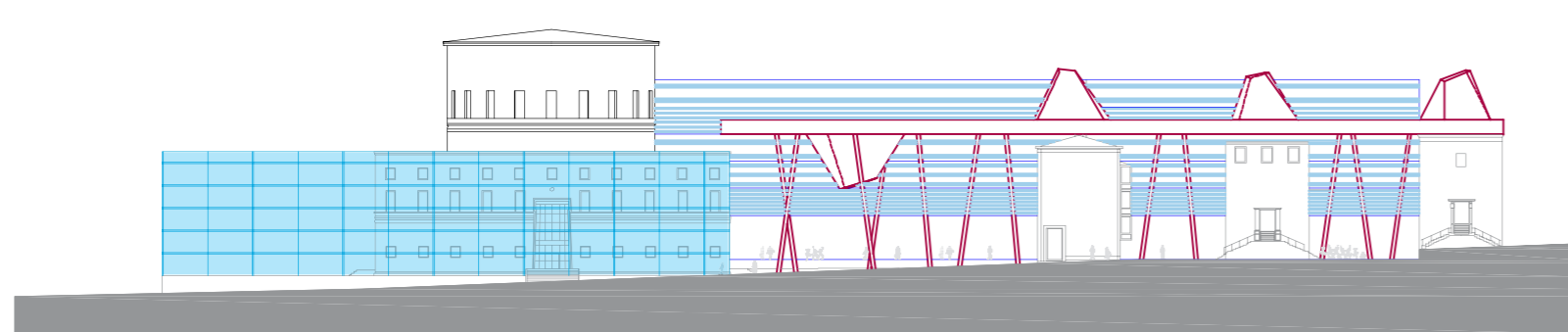
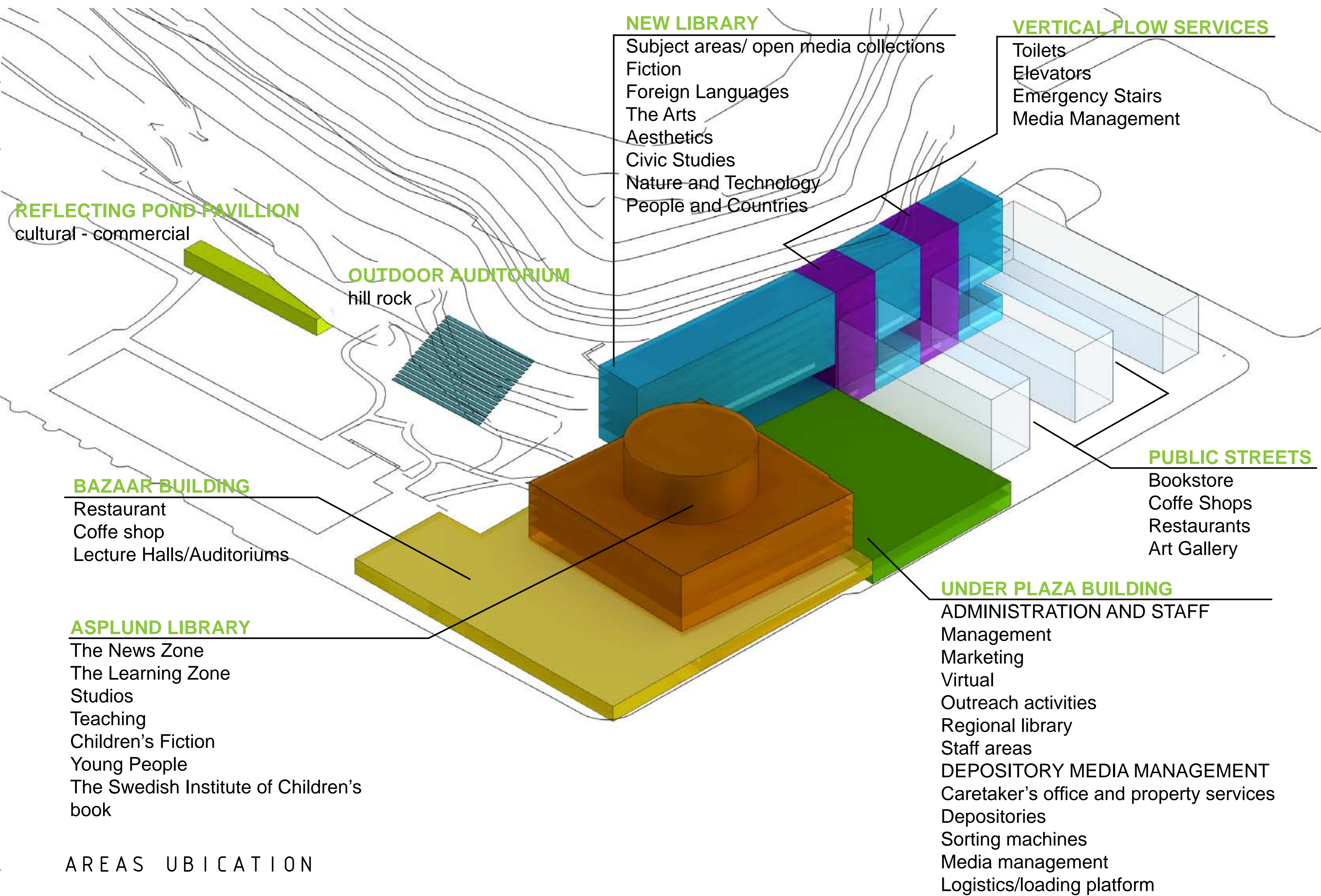


**SCHOOL OF ECONOMY**

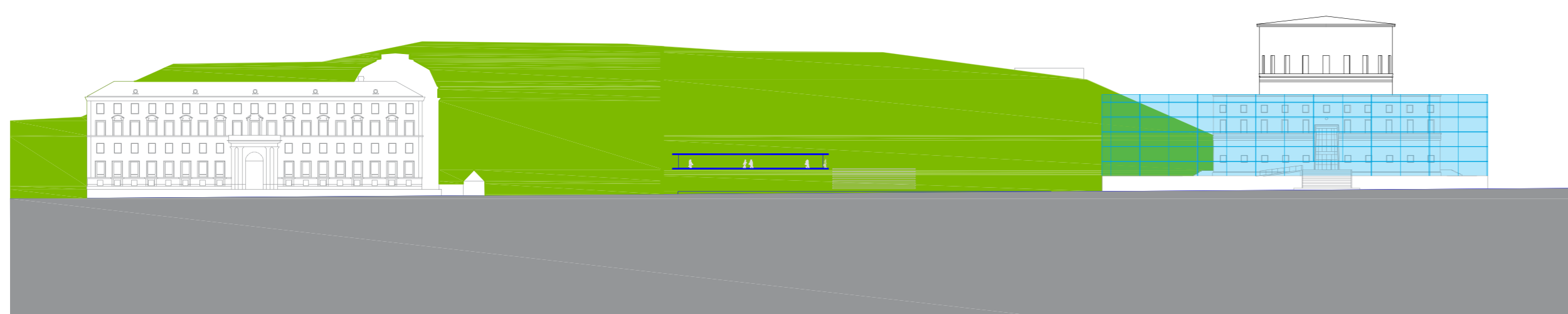
**ELEVATION A - A**  
 e s c | 1 : 1000

# 2 As Simple and Pure as old nordic literature

interlacing the hill, the libraries and the city



ODENGATAN FACADE  
 esc | 1:1000



SVEAVÄGEN FACADE  
 esc | 1:1000

